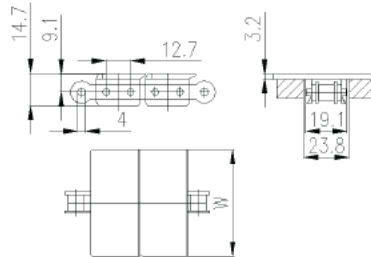


SNAP-ON PLATE TOP CHAINS

843 STRAIGHT RUNNING PLATE TOP CHAINS



Code		Plates width	Weight	Backflex R
CS	SS	mm	kg/m	mm
843-K137	843SS-K137	34.9	0.83	100
843-K200	843SS-K200	50.8	0.89	100
843-K325	843SS-K325	82.6	1.03	100

Plate mat.:POM

Base chain mat.:

stainless steel(SS)

or carbon steel(CS)

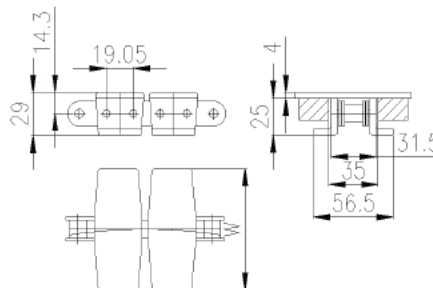
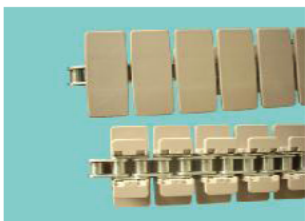
Color:white/brown

Working load:1500N(SS)

2000N(CS)

Packing unit:10ft(120links)

1873 SIDEFLEXING PLATE TOP CHAINS



Code		Plates Width	Weight	Backflex Radius	Min. Radius
CS	SS	mm	kg/m	mm	mm
1873-K325	1873SS-K325	82.6	2.1	150	356
1873-K450	1873SS-K450	114.3	2.26	150	356
1873-K600	1873SS-K600	152.4	2.41	150	457
1873-K750	1873SS-K750	190.5	2.56	150	457
1873-K1000	1873SS-K1000	254.0	2.78	150	457
1873-K1200	1873SS-K1200	304.8	3.01	150	457

Plate mat.:POM

Base chain mat.:

stainless steel(SS)

or carbon steel(CS)

Color:white/brown

Working load:2000N(SS)

4000N(CS)

Packing unit:10ft(80links)

SNAP-ON PLATE TOP CHAINS

1873-D SIDEFLEXING PLATE TOP CHAINS WITH SNAP ON RUBBER GRIPPERS

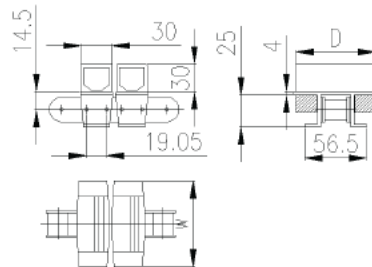


Plate mat.:POM
 Gripper mat.:rubber
 Base chain mat.:
 stainless steel(SS)
 or carbon steel(CS)
 Color:white/black
 Working load:2000N(SS)
 4000N(CS)
 Packing unit:10ft(80links)

Code		Plates Width	Rubber Width	Weight	Backflex Radius	Min. Radius
CS	SS	mm	mm	kg/m	mm	mm
1873-D-K325	1873SS-D-K325	82.6	80	2.9	150	356
1873-D-K600	1873SS-D-K600	152.4	152	4.1	150	457
1873-D-K750	1873SS-D-K750	190.5	186	4.5	150	457

1873-GS SIDEFLEXING PLATE TOP CHAINS WITH SNAP ON RUBBER GRIPPERS

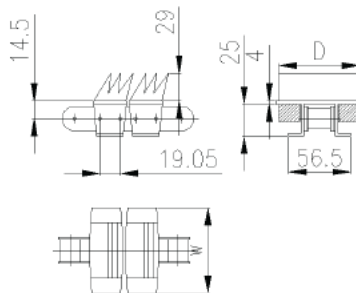
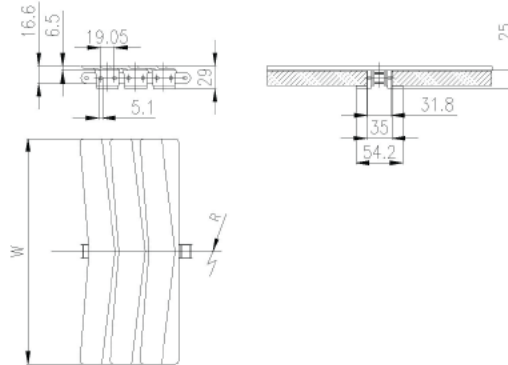
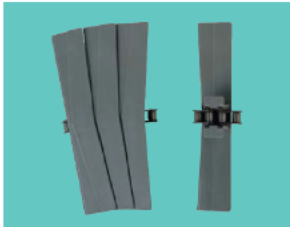


Plate mat.:POM
 Gripper mat.:rubber
 Base chain mat.:
 stainless steel(SS)
 or carbon steel(CS)
 Color:white/black
 Working load:2000N(SS)
 4000N(CS)
 Packing unit:10ft(80links)

Code		Plates Width	Rubber Width	Weight	Backflex Radius	Min. Radius
CS	SS	mm	mm	kg/m	mm	mm
1873-GS-K325	1873SS-GS-K325	95.2	82.6	3.0	150	356

SNAP-ON PLATE TOP CHAINS

3873 PLASTIC PLATE TOP CHAINS



Code		Plates Width	Weight	Backflex Radius	Min. Radius
CS	SS	mm	kg/m	mm	mm
3873-K1000	3873SS-K1000	254.0	3.5	150	356
3873-K1200	3873SS-K1200	304.8	4.1	150	457

Plate mat.:POM

Base chain mat.:

stainless steel(SS)

or carbon steel(CS)

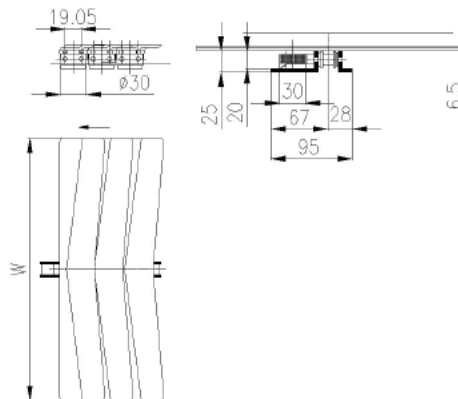
Color:white/brown

Working load:2000N(SS)

4000N(CS)

Packing unit:10ft(80links)

3873 PLASTIC PLATE TOP CHAINS WITH SIDE BEARINGS



Code		Plates Width	Weight	Backflex Radius	Min. Radius
CS	SS	mm	kg/m	mm	mm
3873-K1200	3873SS-K1200	304.8	5.70	150	457

Plate mat.:POM

Base chain mat.:

stainless steel(SS)

or carbon steel(CS)

Color:white/brown

Working load:2000N(SS)

4000N(CS)

Packing unit:10ft(80links)