

PLASTIC FLEXIBLE CHAINS

PLASTIC FLEXIBLE CHAINS

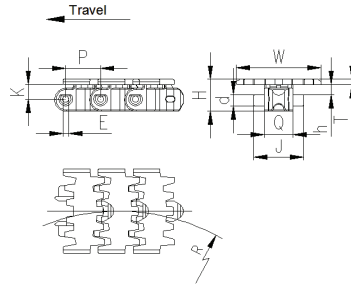
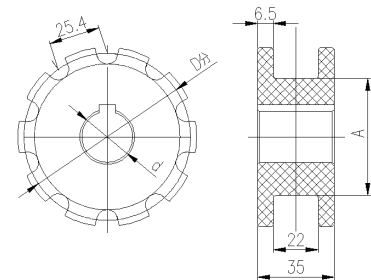


Plate mat.:POM
 Pin mat.:stainless steel
 Max.length:12m
 Color:white
 Working load:2100N
 Packing unit:10ft

Code	P	W	R	T	K	H	h	E	J	Q	d
	mm	mm	mm	mm	mm	mm	mm	mm	mm	mm	mm
LF-63	25.4	63	150	4	10.4	23.3	7.5	4	36.6	21	8
LF-83	33.5	82.6	150	4	13	25.4	7.5	6	58	35	11.2
LF-103	35.5	103	150	4.5	12.4	26	7.5	7	77	46	12

SPROCKETS FOR LF-63

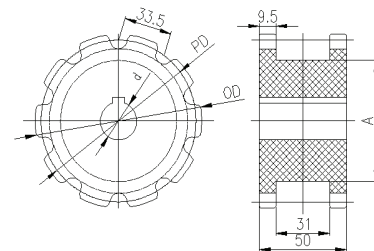
No of teeth	A	Pitch Dia.	Outside Dia.	Bore
	mm	mm	mm	mm
8	40	66.31	66.6	min. 20 max. 40
9	50	74.26	74.6	
10	60	82.20	82.5	
11	65	90.16	90.5	



Machined sprockets;Mat.:PA6;Color:white

SPROCKETS FOR LF-83

No of teeth	A	Pitch Dia.	Outside Dia.	Bore
	mm	mm	mm	mm
9	70	96.49	97.1	min. 20 max. 40
10	80	106.79	107.2	
11	90	117.13	117.7	
12	100	127.50	128.1	



Machined sprockets;Mat.:PA6;Color:white