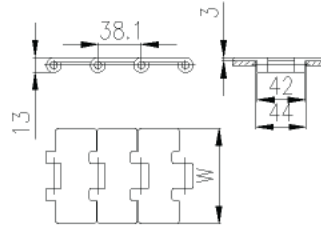
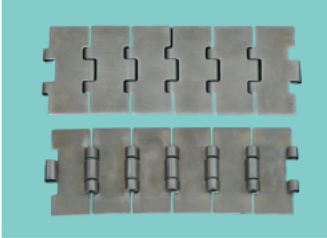


METAL FLAT TOP CHAINS

SS812 STAINLESS STEEL STRAIGHT RUNNING CHAINS SINGLE HINGE



Code	Width	Weight	Backflex Radius	Working Load
	mm	kg/m	mm	N
SS812-K325	82.6	2.54	150	2250
SS812-K350	88.9	2.68	150	
SS812-K400	101.6	2.97	150	
SS812-K450	114.3	3.25	150	
SS812-K500	127.0	3.41	150	
SS812-K600	152.4	4.09	150	
SS812-K750	190.5	4.95	150	

Mat.:SS304/SS430

Max.speed:

80m/min lubrication

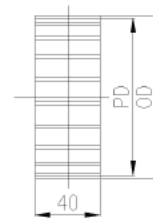
50m/min dry

Max.length:15m

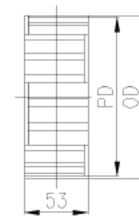
Packing unit:10ft(80links)

SPROCKETS FOR SS812

No. of teeth	Pitch Dia. mm	Outside Dia. mm	Bore mm
17	103.7	104.7	min. 20 max. 40
19	115.7	117.0	
21	127.8	129.0	
23	139.9	140.7	
25	152	153.0	



Machined



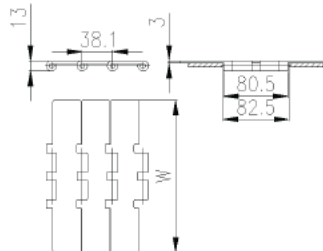
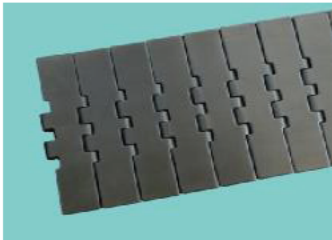
Moulded

Mat.:PA6 Color:white/black; and both one part and splite sprockets are available

Idler wheels for SS812 are the same as that of LF820

METAL FLAT TOP CHAINS

SS802 STAINLESS STEEL STRAIGHT RUNNING CHAINS DOUBLE HINGE



Mat.:SS304/SS430

Max.speed:

80m/min lubrication

50m/min dry

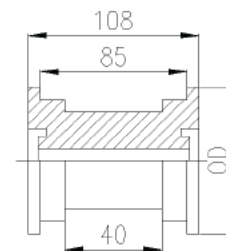
Max.length:15m

Packing unit:10ft(80links)

Code	Width	Weight	Backflex Radius	Working Load
	mm	kg/m	mm	N
SS802-K750	190.5	5.80	150	3500
SS802-K1000	254.0	7.73	150	
SS802-K1200	304.8	9.28	150	

IDLER WHEELS FOR SS802

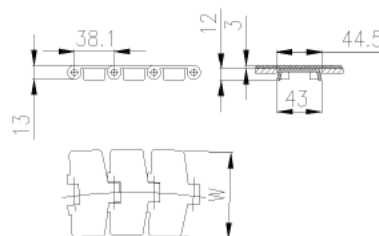
No of teeth	Pitch Dia.	Hub Dia.	Bore
	mm	mm	mm
19	117	60	min. 20 max. 40
21	131	70	
23	140.7	146	
25	155	146	



Machined

Mat.:PA6 Color:white

SS881 STAINLESS STEEL SIDEFLEXING CHAINS WITHOUT TAB



Mat.:SS304/SS430

Max.speed:

80m/min lubrication

50m/min dry

Working load:2250N

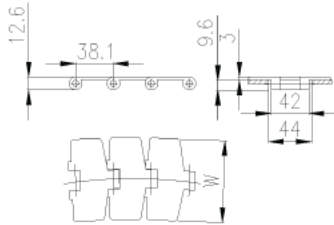
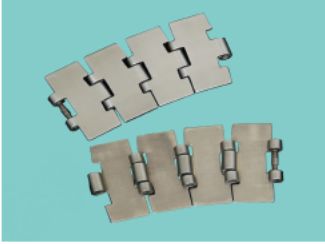
Max.length:15m

Packing unit:10ft(80links)

Code	Width	Weight	Backflex Radius	Min. Radius
	mm	kg/m	mm	mm
SS881-K325	82.6	2.8	75	460
SS881-K450	114.3	3.4	75	460
SS881-K600	152.4	4.2	75	600
SS881-K750	190.5	5.2	75	600

METAL FLAT TOP CHAINS

SS881M STAINLESS STEEL SIDEFLEXING CHAINS MAGNETIC



Code	Width	Weight	Backflex Radius	Min. Radius
	mm	kg/m	mm	mm
SS881M-K325	82.6	2.4	75	460
SS881M-K450	114.3	3.2	75	460
SS881M-K600	152.4	4.4	75	600
SS881M-K750	190.5	4.9	75	600

Mat.:SS430

Max.speed:

80m/min lubrication

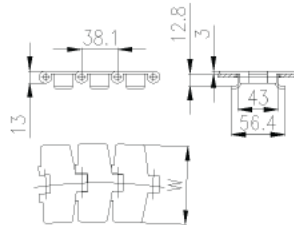
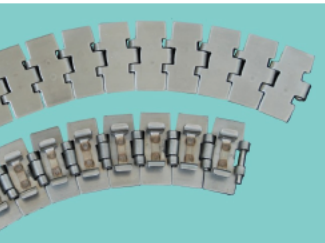
50m/min dry

Working load:2250N

Max.length:15m

Packing unit:10ft(80links)

SS881TAB STAINLESS STEEL SIDEFLEXING CHAINS WITH TAB



Code	Width	Weight	Backflex Radius	Min. Radius
	mm	kg/m	mm	mm
SS881TAB-K325	82.6	3.2	75	460
SS881TAB-K450	114.3	3.9	75	460
SS881TAB-K600	152.4	4.6	75	610
SS881TAB-K750	190.5	5.7	75	610

Mat.:SS304/SS430

Max.speed:

80m/min lubrication

50m/min dry

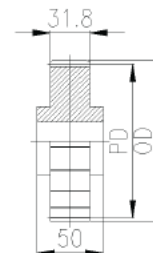
Working load:2250N

Max.length:15m

Packing unit:10ft(80links)

SPROCKETS FOR SS881/SS881M/SS881TAB

No of teeth	Pitch Dia.	Outside Dia.	Bore
	mm	mm	mm
17	103.7	104.7	min. 20 max. 40
19	115.7	117	
21	127.8	129	
23	139.9	140.7	
25	152.0	153	



Machined

Mat.:PA6 Color:white/black; and both one part and splite sprockets are available